

How to connect Blue-tooth Hands Free adapter to FMB630 device V1.1



*This version is suitable for device with firmware version **00.02.44** and newer

Table of Contents

1	Blue-tooth settings configuration	2
2	Connecting Blue-tooth Hands Free adapter	3

1 Blue-tooth settings configuration

These are instructions how to easily prepare Blue-tooth Hands Free device connection to FMB630 device. First we need to configure FMB device Blue-tooth settings for proper connection to this hands-free unit. These are required steps:

1. Connect FMB device to PC using USB cable.
2. Launch **FM63XX Configurator** and connect to device as shown in **Figure 1** below.

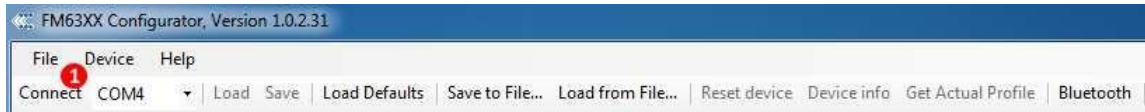


Figure 1 FMB630 connecting to configurator

3. After successful connection to device press “**Load**” button to load device current configuration visible at **Figure 2.1**

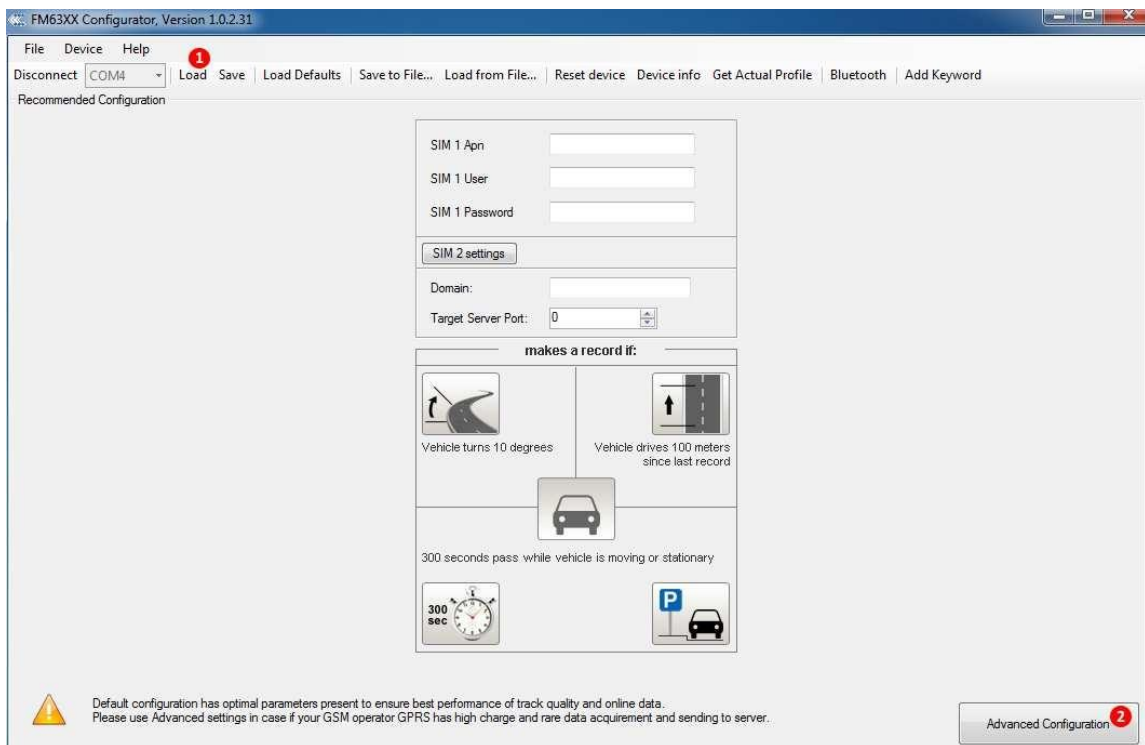


Figure 2.1 Load configuration from device; **2.2** Advanced configuration

4. When device configuration is loaded press „**Advanced configuration**“ button at **Figure 2.2**

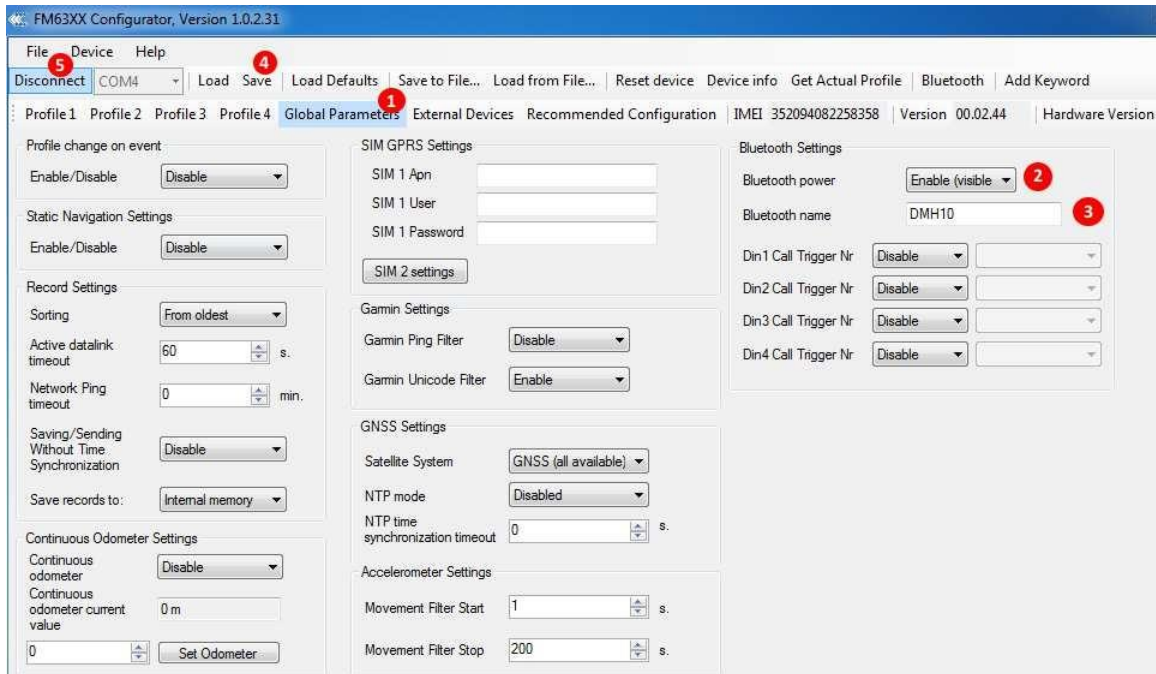


Figure 3.1 Global Parameters; **3.2** Enable Blue-tooth; **3.3** External Blue-tooth device name; **3.4** Save device configuration; **3.5** Disconnect device

5. Select “**Global Parameters**” settings tab at **Figure 3.1**
6. Turn on Blue-tooth power „**Enable (visible)**“ (**Figure 3.2**).
7. Set “**Blue-tooth name**” as your Hands Free device name (**Figure 3.3**). for proper device identification and connection to it. In this example Hands Free headset name is „DMH10“ but at least 2 characters are needed to recognize it and connect to it. For better and faster adapter identification in network you could enter a full device name. You could check your Hands Free adapter Blue-tooth name by scanning nearby Blue-tooth devices using mobile phone or computer with Blue-tooth adapter.
8. After all these steps press „**Save**“ to save configuration (**Figure 3.4**).
9. Now you can disconnect FMB device from a configurator (**Figure 3.5**).

2 Connecting Blue-tooth Hands Free adapter

After this configuration you could connect your Hands Free device to FMB device. Turn on Hands Free device then turn on its Blue-tooth connection for pairing following your model instructions¹. Hands Free adapter should make a special sound in ear from speaker or its led identification should change to inform about successful connection². To check if adapter is successfully connected, call to FMB device, Hands Free device should start ringing. If you later restart FMB device it will automatically connect to this adapter.

¹ Hands Free device Blue-tooth connection pairing instructions depends on specific model.

² Hands Free device notification about paired Blue-tooth connection depends on specific model.